



Quality Components for the OEM

Innovation Efficiency Quality Sustainability





Contents

- p1: Vision & Mission Statement*
- p2: Company Profile*
- p3: Sheetmetal - Automotive*
- p4-5: Sheetmetal - Agriculture*
- p6: Stamping Parts*
- p7: Precision Deep Drawing*
- p7: Progressive Die Stamping*
- p8: Sheetmetal - Construction*
- p9: Plastic Injection Molding*
- p10-11: Aluminium (Zinc) Die-casting*
- p12-13: Gravity/Investment Casting*
- p14-15: CNC Machining*
- p16: Quality Assurance*
- p17: Surface Treatment*
- p18: Contact Details*

Our Vision

Achieve the best industrial components solution for global OEM needs

Our Mission

ESKATE China is a customer-oriented industrial components supplier with a global commitment to provide our clients with a comprehensive solution by using up-to-date technology, state-of-the-art facilities and international partnerships

Core Value

Innovation Efficiency Quality Sustainability



Competitive Advantages

- Management system is ISO 9001:2008 Certified
- ERP Management System ensures smooth operation
- Combined manufacturing and trading activities, provides customers with a comprehensive one-stop solution
- Rich experience in export business, understanding of technical, material and quality standards worldwide, especially for EU countries
- Knowledgeable and experienced R&D team assists clients to develop products from concept through prototype to mass production
- Headquarters office in Germany provides support in terms of technical communication, quality control, logistical service in EU and reasonable call-off stocks



Quality Components for the OEM

ESKATE China is a subsidiary of a German company ESKATE Rohrverbindungstechnik GmbH. ESKATE China offers customers a comprehensive project management service which includes practical consulting solutions to your custom manufacturing requirements. We are skilled professionals with long experience at supplying OEM components to the following industrial sectors:

- Sheetmetal
- Stamping
- Deep Drawing
- Aluminium (Zinc) Die-casting
- Investment Casting
- Plastic Injection Molding
- CNC Machining
- Product Design

The ESKATE China Project Development Process

- Understanding the customer's requirements
- Feasibility and capability study
- How are we going to do it? 5W1H
- Design and prototyping
- Advanced Production Quality Planning (APQP)
- Quality requirements, Process flow, Control plan, FMEA
- Tooling (Design and Manufacture)
- ISIR, PPAP samples
- Mass Production
- Logistics
- Value Stream Mapping (VSM)





Quality Components for the OEM

Sheetmetal - Automotive OEM Components

- Customers: GM, Volkswagen etc.
- Material: DC01(ST12), DC04(ST14, ST15), ST37-2G, ST44-3G, ST52-3G etc.
- Surface treatment: Electrophoresis, or as per required.
- Machine Capacity: 1,200 tons, maximum part size: 200x150cm

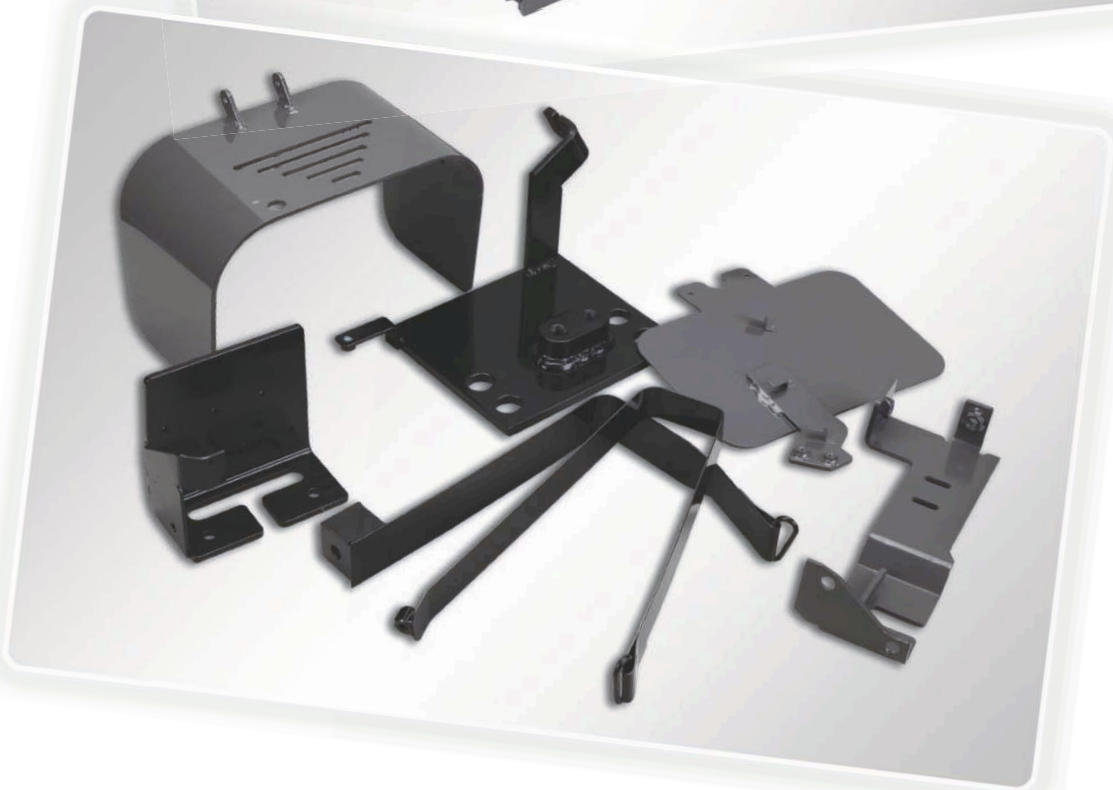
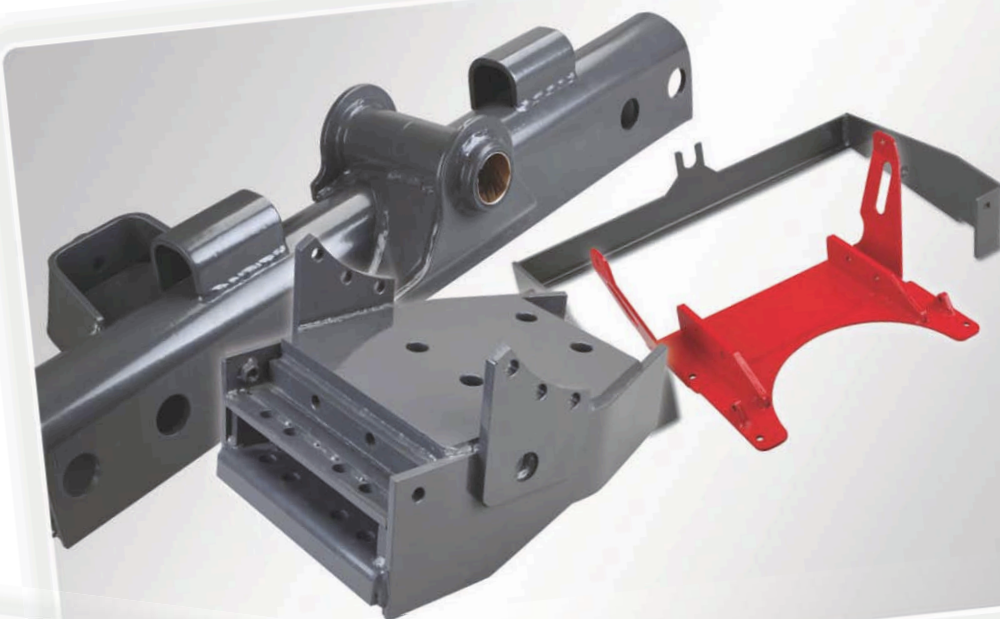




Quality Components for the OEM

Sheetmetal - Agriculture Machinery OEM Components

- Customers: AGCO, New Holland and John Deere etc.
- Material: DC01(ST12), DC04(ST14, ST15), ST37, ST52, ASTM A36, AISI 1010, AISI 1020, Q235B, Q345B etc.
- Surface Treatment: Electrophoresis, Walspar painting, powder-coating, zinc-plating etc.
- Maximum Cutting Capacity in Thickness: Plasma - 60mm, laser cutting: 25mm





Sheetmetal - Agriculture OEM Components

Sheetmetal - Products for Various Industrial Applications

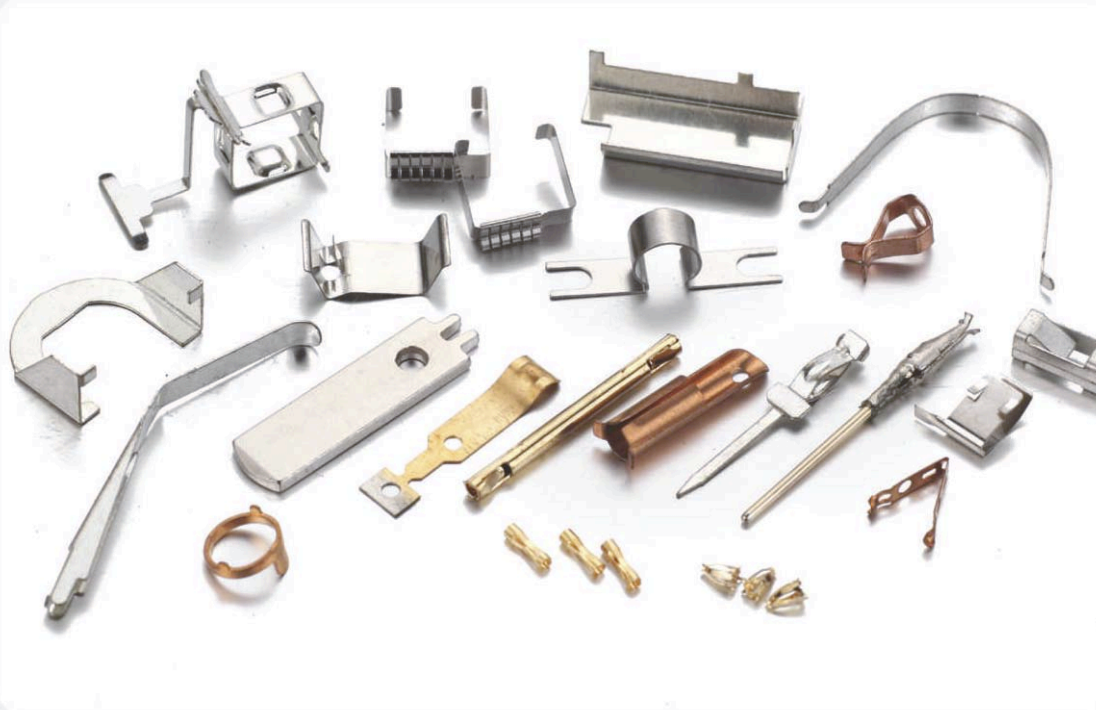
- Material: DC01(ST12), DC04(ST14, ST15), ST37, ST52, ASTM A36, AISI 1010, AISI 1020, Q235B , Q345B etc.
- Surface Treatment: Electrophoresis, painting, powdercoating, zinc-plating, hot dip galvanization, chromium plating, nickel plating etc.



High Precision Deep Drawing Products



Progressive Die Stamping Products



Sheetmetal - Products for Construction Industry



➤ Roof Gutter Brackets and accessories for EU markets



➤ Tools and accessories for North American construction industry
Customers including RONA and the Home Depot

Plastic Injection Molding

- Mouldbase: LKM, HASCO, 1.1730, S50C, S55C, 1050, 1055
- Active Elements: P20, 1.2311, 1.2312, 1.2738, 1.2343, 1.2344, H11, H13, 420
 - ASSAB: 718, 718S, 718H, S316/S316H/S316 SUP/S316H SUP, POLMAX/168
 - SAARSTAHL: GS738, GS2311, GS2312, GS638, GS688, GS2316
 - DAIDO: NAK80, NAK55, PX88, PX4, PX5, S-Star(A)
 - BOHLER: M201, M202, M238, M300 ESR, M310 ESR, M310H ESR
- Hotrunner: YUDO, INCOE
- Mould Surface: Photo etching, erode structure, shot blaster, line polishing, high gross polishing, mirror polishing
- Machines: 100-3,000 ton closing force, part weight: 1-15,000 g.



Aluminium (Zinc) Die-casting

- We make final product including tooling construction design, tooling manufacturing, CNC machining, surface treatment and assembling
- We also make die-casting tooling according to customers' requirements for export.
- Core Element Material: H13, 1.2344 (X40 CrMoV51), 1.2367(X38CrMoV5-1), H11, 1.2343 (X38CrMoV5-1)
- Bolster Material: P20, 1.2312, 1.2738
- Standard Components: HASCO standard
- Popular Product Material: AL226, AL230, AISi10Mg, A380, ADC12, ADC10, Zamak 3, Zamak 5, ZA8 etc.
- Product Surface Treatment: Brush, line polishing, high gross polishing, mirror polishing, sand blaster, anodizing, zinc-plating, chromium-plating, nickel-plating, powder coating, silver coating etc.
- Maximum Machine Closing Force: 2,700 tons, part weight: 5 - 30,000g





➤ Auto Parts



➤ Zinc Die-casting



➤ Tremec - Folk for Trasmission Box



➤ Auto Parts - Chromium Plating



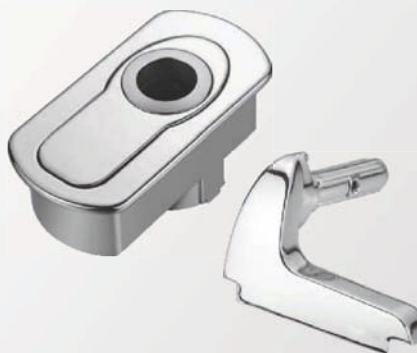
➤ Washing Machine Component



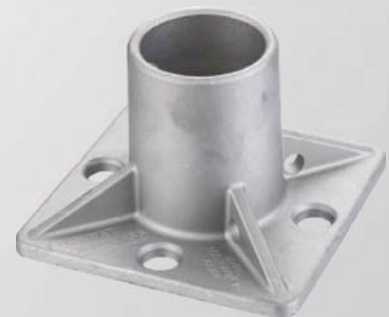
➤ Machining & Powder-coating



➤ Machining , Powder-coating
Assembling



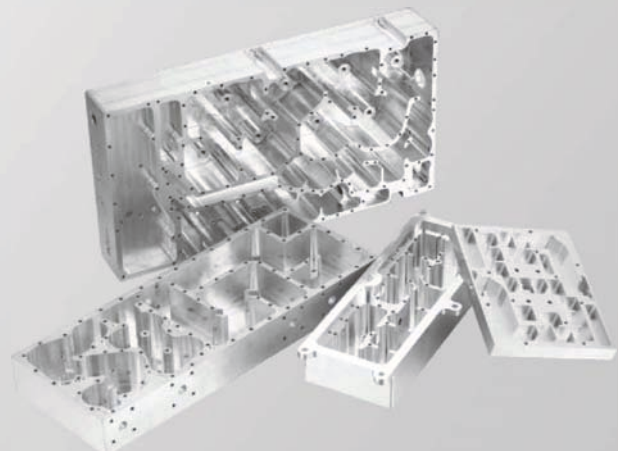
➤ High Gross Polishing
Chromium -plating



➤ Aluminium Die-casting



➤ Die-casting, Brushing Surface



➤ Telecommunication Parts, Machining & Silver Coating

Foundry

Professional in providing service for:

- Sand Molded Casting
- Investment Casting
- Gravity Casting
- Lost Foam Casting
- Material: Aluminium Alloys, Copper Alloys, Carbon Steel,
Stainless Steel(1.4301, 1.4571, 304, 304L, 316, 316L etc.)
- Also providing CNC machining and surface treatment services as per required



Aluminium Gravity Casting & Machining



Brass Gravity/Investment Casting & Machining



CNC Machining Parts

- Material: Stainless steel, carbon steel, alloys, aluminium, copper, sinter parts etc.
- Material Pre-treatment: Extrusion, hot forging, cold forming, investment casting, die-casting.
- Surface Treatment: Anodizing, zinc-plating, chromium-plating, nickel-plating, laser marking, blackening etc.





Stainless Steel Machining Parts



Sinter Parts



Quality Components for the OEM



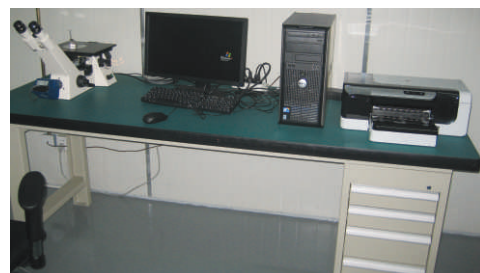
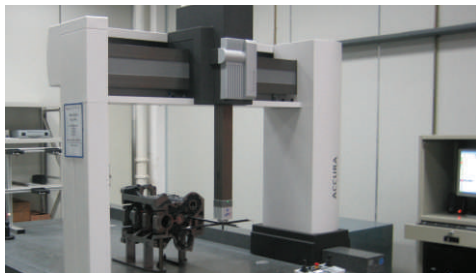
ISO9001:2008

Quality Assurance

The most rigorous quality policy starts from material control and is followed through to final pre-shipment inspection.

In supplement to our own QC facilities, we co-operate with global recognized laboratories with the following facilities:

- CMM (Coordinate Measuring Machine)
- Projector
- Spectrometer
- X-Ray Tester
- Metallographic Microscope
- MPT
- Tensile Tester
- Hardness Tester
- Salt Spray Tester
- Digital Plating Thickness Meter



Surface Treatment

International standard of surface cleaning, pickling, corrosion protection, passivation, phosphating, coating surface as well as RAL and Pantone color standard powder-coating, painting, high gross polishing, laser marking, tampon printing are available.

The processes include zinc plating, hot dip galvanizing, zinc alloys, brass, bronze, white bronze, chromium plating, hard chromium, nickel plating, tin plating, copper plating and silver coating etc.

Dacromet, Delta-MKS, SurTec surface treatment technology applicable for various parts. Chromium (VI) free zinc plating corrosion protection, salt spray test against red ranged from 240 to 2,000 hours.

In accordance with our clients' requirements, our supplier is authorized to produce parts that meet surface standards issued by the following companies: BMW, Daimler Chrysler, Fiat, General Motor, Jaguar, Landrover, Porsche, PSA, VW, Volvo, Continental Teves, Kamax, Knorr-Bremese, Liebherr, MAN, TRW, VDA and ZF.

BETA FER G253 pickling for stainless steel parts, mineral acid pickling for iron and steel, pickling and brightening for aluminium parts are also available.



Coating



Micro
Technology



Corrosion
Protection



Passivation



Phosphating



Cleaning



Colouring



Pickling



Delacquering

Contact Details



Quality Components for the OEM

ESKATE China

(Representative Office)

12B04, 69 Chejiao St.

Ningbo 315010, China

Phone: +86 574 8749 1530

Fax: +86 574 8731 8362

www.eskate.cn

info@eskate.cn

Mr. Lifu Chen

lifu@eskate.cn

Mr. Oliver Breitenkamp

oliver@eskate.cn



eskate®
Rohrverbindungstechnik GmbH

ESKATE Rohrverbindungstechnik GmbH

(Headquarter)

Köhlterholz 7, 32479 Hille - Germany

Phone: +49 5734 6666 - 6

Fax: +49 5734 6666 -00

www.eskate.de

info@eskate.de

Mr. Oliver Breitenkamp

ob@eskate.de

Mr. Wilhelm Moeller

wm@eskate.de



ESKATE Middle East FZC

PO BOX: 50084, Industrial Park

Ras al Khaimah - United Arab Emirates

Phone: +971 72660 406

Fax: +971 72660 407

www.eskate.com

info@eskate.com

Mr. Oliver Breitenkamp o.breitenkamp@eskate.com

Mr. Madhu Pillai m.pillai@eskate.com



ESKATE Polska Sp. z o. o.

ul. Przemysłowa 2, 88-140 Gniewkowo

Poland

Phone: +48 52 3558 380

Fax: +48 52 3510 361

www.eskate.pl

info@eskate.pl

Mr. Jarosław Luczak j.luczak@eskate.pl

Mr. Torsten Kreft t.kreft@eskate.pl